

Tumark[®] Professional

The new marker system

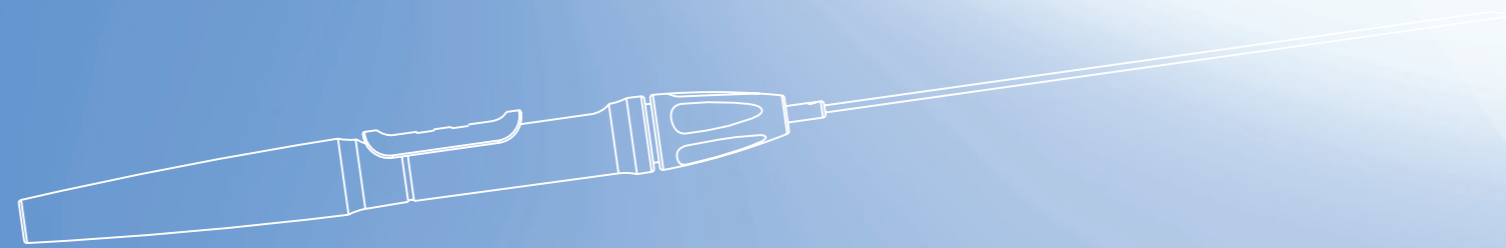


SOMATEX[®]
MEDICAL TECHNOLOGIES GMBH



www.somatex.com

Tumark® Professional – Precision visibility



Safe and easy thanks to single-handed operation

Tumark® Professional enables precise tissue marking. With Tumark® Professional, tumors can be marked in a gentle way and with minimum invasion before cytostatic or radiation treatment begins. Following successful chemo or radiation therapy, the tissue area concerned can be reliably and quickly found again. Tumark® Professional is ideally suited for marking a biopsy site.

The tumor can be reliably localised and precisely radiated – thereby protecting healthy areas. Thanks to its 3D design, the marker offers firm anchorage in the tissue. Moreover the marker's surface characteristics ensure optimal visibility for ultrasound, MRI and mammography.

The Tumark® Professional is also available as fully MRI-compatible version: Tumark® MRI.

Use Advantages Product options

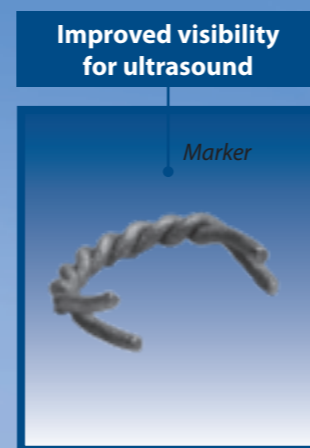
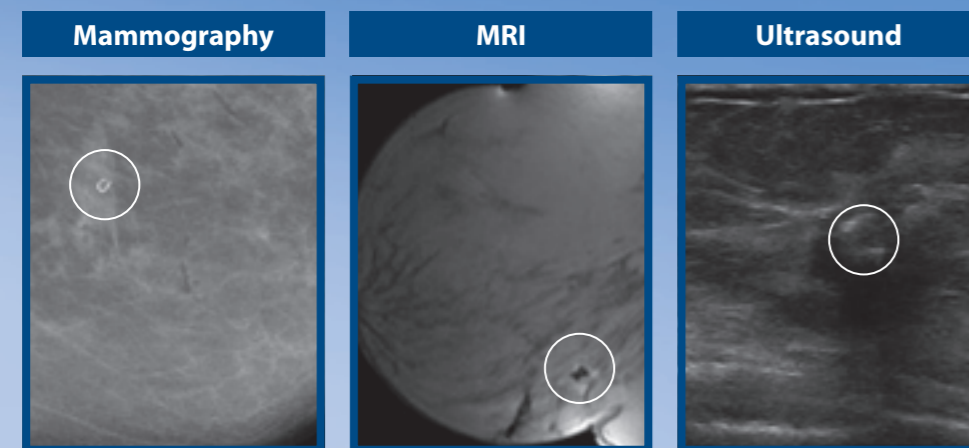
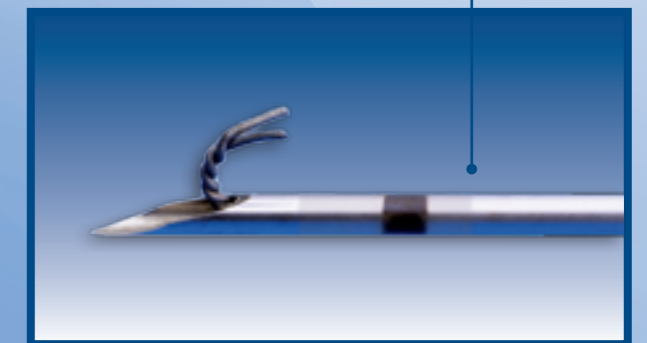
Advantages at a glance

- Clever 3D marker design enables firm anchorage in the tissue and increases visibility in all positions
- Optimal visibility for ultrasound, mammography and MRI
- Marker is MRI compatible up to 3 Tesla
- The marker is approved as implantable material (Nitinol)
- Ergonomic handle for single-handed operation

Use

- Marking after removal of tumor
- Marking of suspicious lesions
- Tumor marking during neoadjuvant chemotherapy
- For marking the biopsy site
- Orientation for planning radiation therapy

The marker is supplied preloaded



Images from Dr. Siegmann, Radiology Diagnostics, University Hospital Tübingen

Product options

Product name	Order-No.	Cannula diameter	Packaging unit
Tumark® Professional	271 560	18G 1,2 x 120 mm	10
NEW: Tumark® MRI*	601 570	18G 1,2 x 120 mm	10

* Shape and structure of the MRI version differ from figures

SOMATEX[®]

MEDICAL TECHNOLOGIES GMBH

Rheinstr. 7d
D-14513 Teltow
Germany

Tel. +49 (0) 3328 30 76-0
Fax +49 (0) 3328 30 76-99
info@somatex.com
www.somatex.com