

## Broncho-Cut Expert® Advantages at a glance

### Up to 3 times more cytologically useful material due to:

- ▶ largest possible cannula diameter (1.0 mm)  
catheter diameter of 1.8 mm – fits all
- ▶ bronchoscopes with a working channel  
from 2.00 mm

### Improved orientation for users due to:

- ▶ distal markings
- ▶ transparency of the catheter

### Excellent handling due to:

- ▶ safe stops of the cannula positions
- ▶ longer catheter tube (1.200 mm) provides  
more elbowroom between doctor and  
assistant
- ▶ excellent transmission of negative pressure
- ▶ optimal transmission of puncture force

### Convincing Advantages

**Broncho-Cut Expert®** enables improved  
identification of the stage of the  
bronchial carcinoma.

**Broncho-Cut Expert®** improves the  
planning of surgeries on malignant  
lymphoma.

**Broncho-Cut Expert®** is a valuable  
alternative to surgical biopsy methods.

**Broncho-Cut Expert®** for TBNA is  
patient-friendly.

**SOMATEX®**  
MEDICAL TECHNOLOGIES GMBH

Rheinstraße 7 d  
D-14513 Teltow  
Germany

Tel. +49 (0) 3328 30 76-0  
Fax +49 (0) 3328 30 76-99  
info@somatex.com  
www.somatex.com

999934-E-V1 11/07

**SOMATEX®**  
MEDICAL TECHNOLOGIES GMBH

**Broncho-Cut Expert®**  
Transbronchial Aspiration Needle

# Broncho-Cut Expert® – The convincing solution for 3 times more biopsy sample

Aspiration cytology with rigid fine needles combined with video bronchoscopes is an established diagnostic procedure.

With the improved Broncho-Cut Expert®, SOMATEX® responds to the needs and desires of clinical practice for significantly larger biopsy samples as well as improved handling.

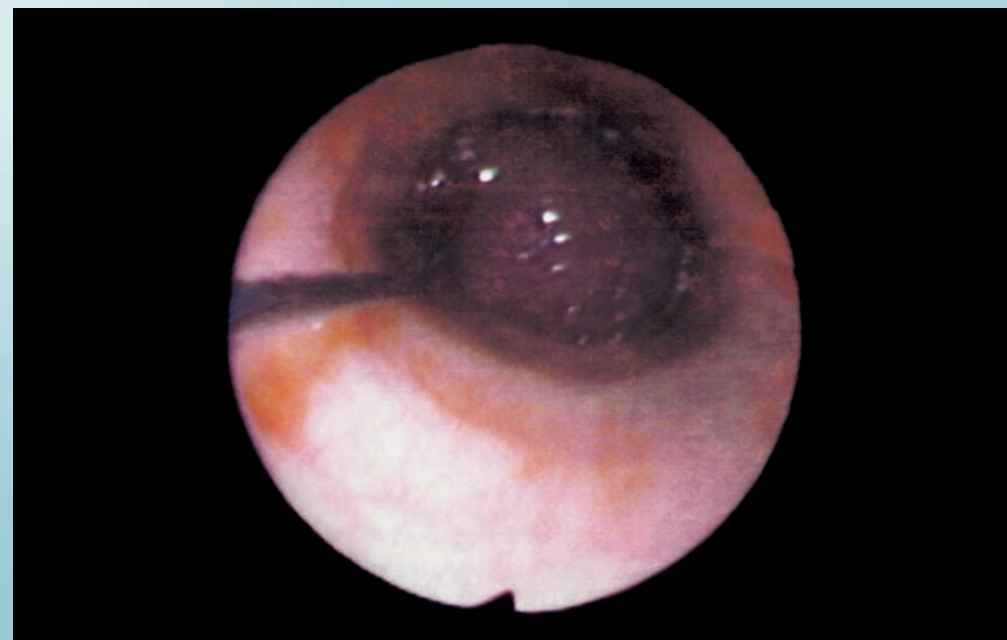
### Performance

Broncho-Cut Expert® 1.0 allows to sample up to 3 times the amount of cytologically useful material compared with conventional systems.

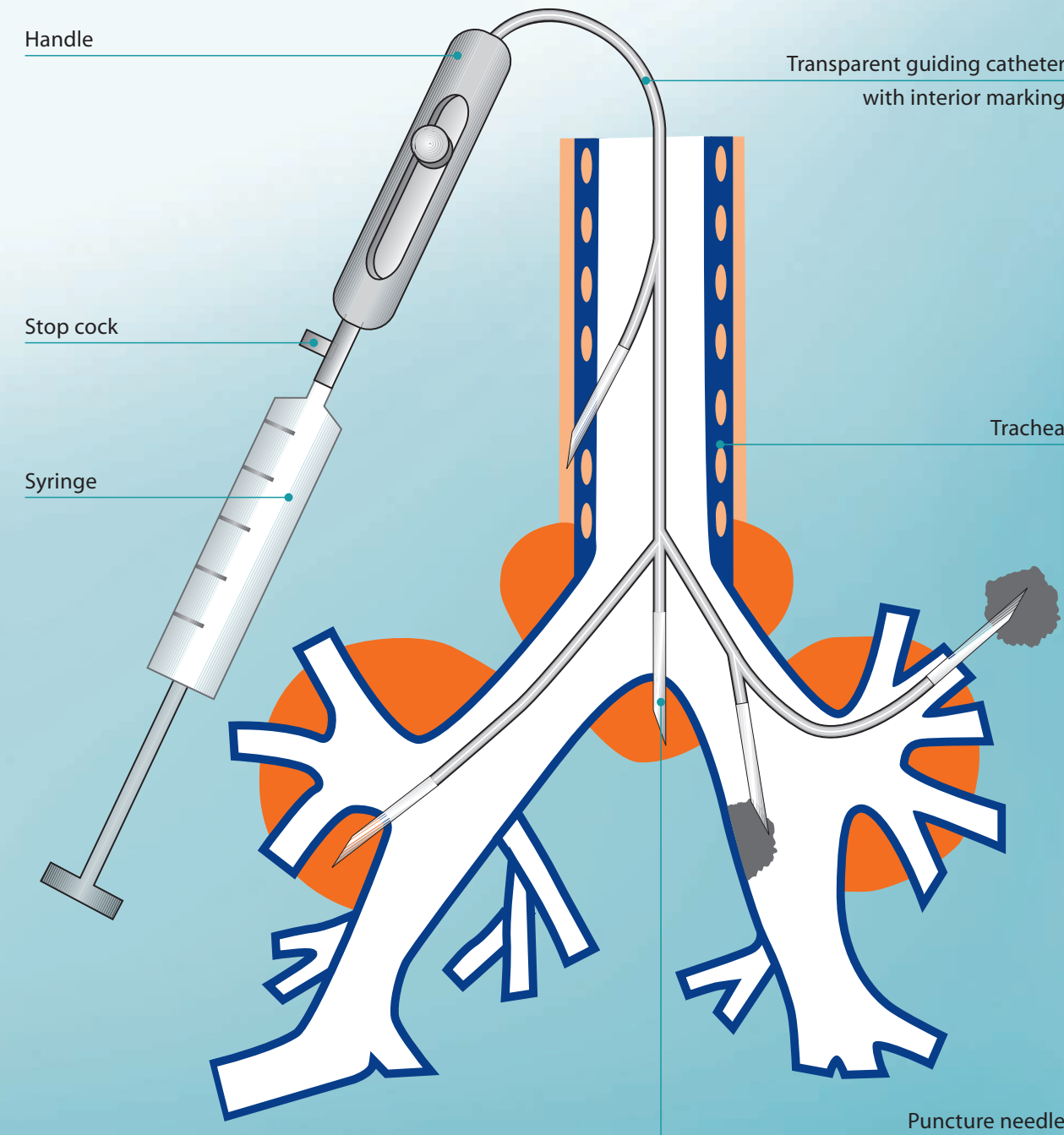
### Indications

Lesions of the bronchial tract diagnosed as suspicious by aspiration cytology:

- ▶ Visible endobronchial tumours
- ▶ Non-visible bronchogenic and pulmonary processes – localisation based on indirect tumour signs or imaging techniques
- ▶ Mediastinal lesions – localisation based on indirect tumour signs or imaging techniques



## Using Broncho-Cut Expert®



### Penetration depth

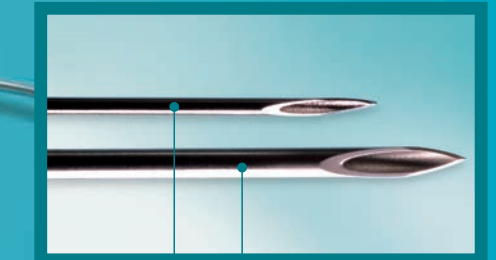
- ▶ With vertical perforation: at most 12 mm beyond bronchial wall
- ▶ With perforation of the trachea at a steep angle: 3 mm beyond the mucous membrane

## Features Description Product versions



**Lockable.**  
The handle of the Broncho-Cut Expert® can be locked in two needle positions.

**Extremely sharp.**  
Penetration with Broncho-Cut Expert® is particularly easy thanks to its sharp needle.



Ø = 0.7 mm

Ø = 1.0 mm

Aside from the Broncho-Cut Expert® with an outer diameter of 1 mm, a smaller version is also available.



**Radiopaque.**  
The flexible catheter of the Broncho-Cut Expert® is radiopaque and distal transparent. The interior markings allow for easy verification of the positioning.

### Product versions

Broncho-Cut Expert® is compatible with bronchoscopes with working channels diameters from 2.0 to 2.6 mm.

**New!**

Product versions	Order no.	Catheter	Needle	Qty
Broncho-Cut Expert® 0.7	098 307	6 F/1,200 mm	0.7 x 15 mm	10
Broncho-Cut Expert® 1.0	098 310	6 F/1,200 mm	1.0 x 18 mm	